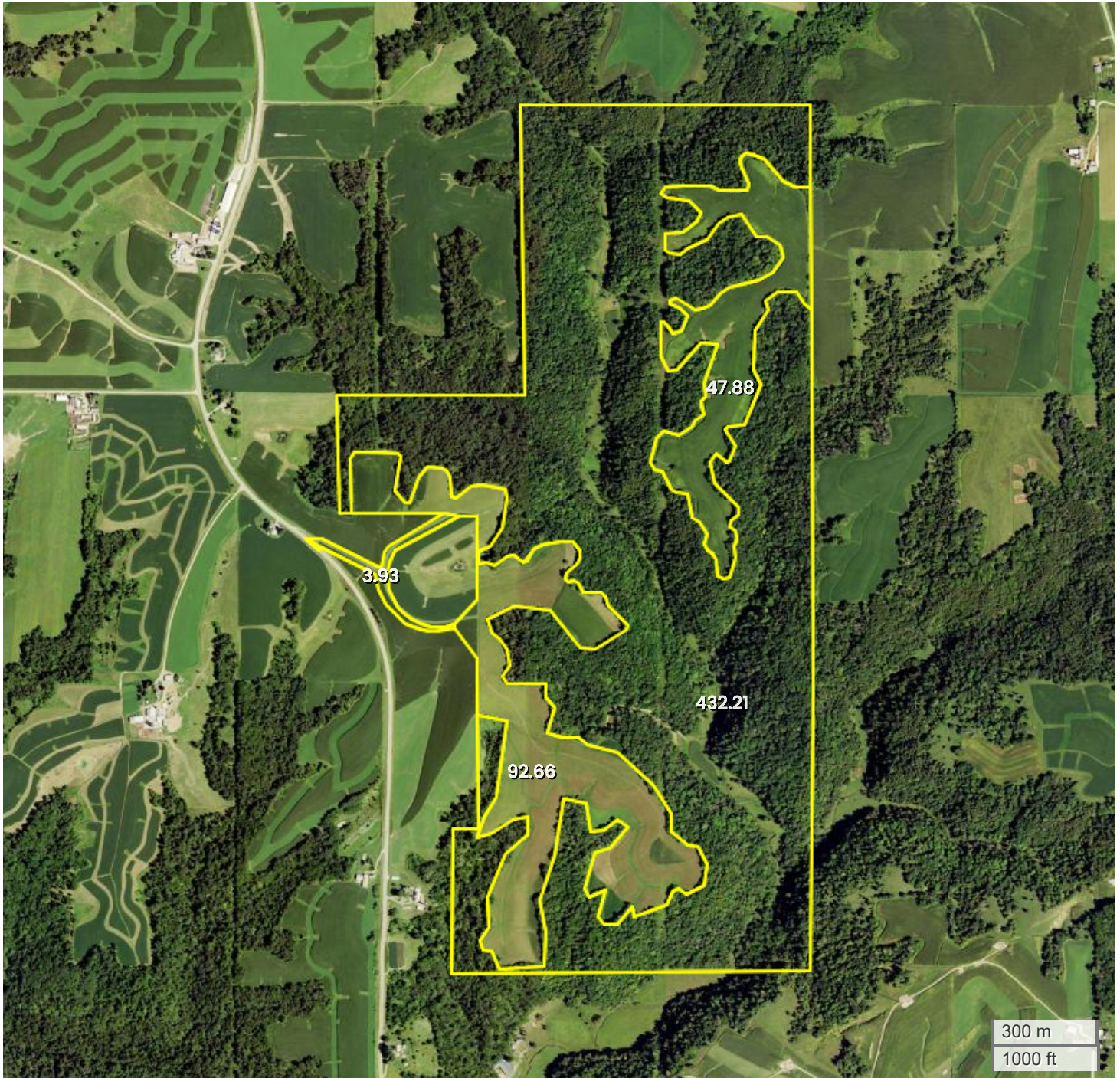




STATE HIGHWAY 133 FARM

AERIAL MAP



Center: 42.746043, -90.991033

08-3N-5W

Cassville Township

Grant County, WI

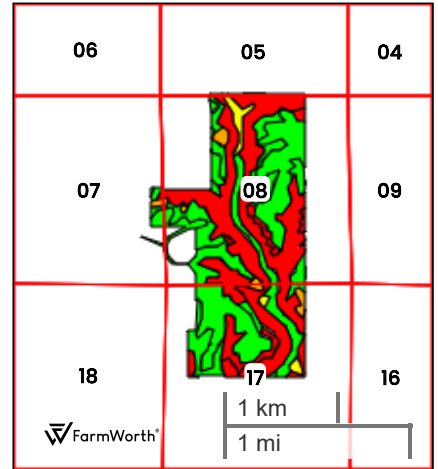
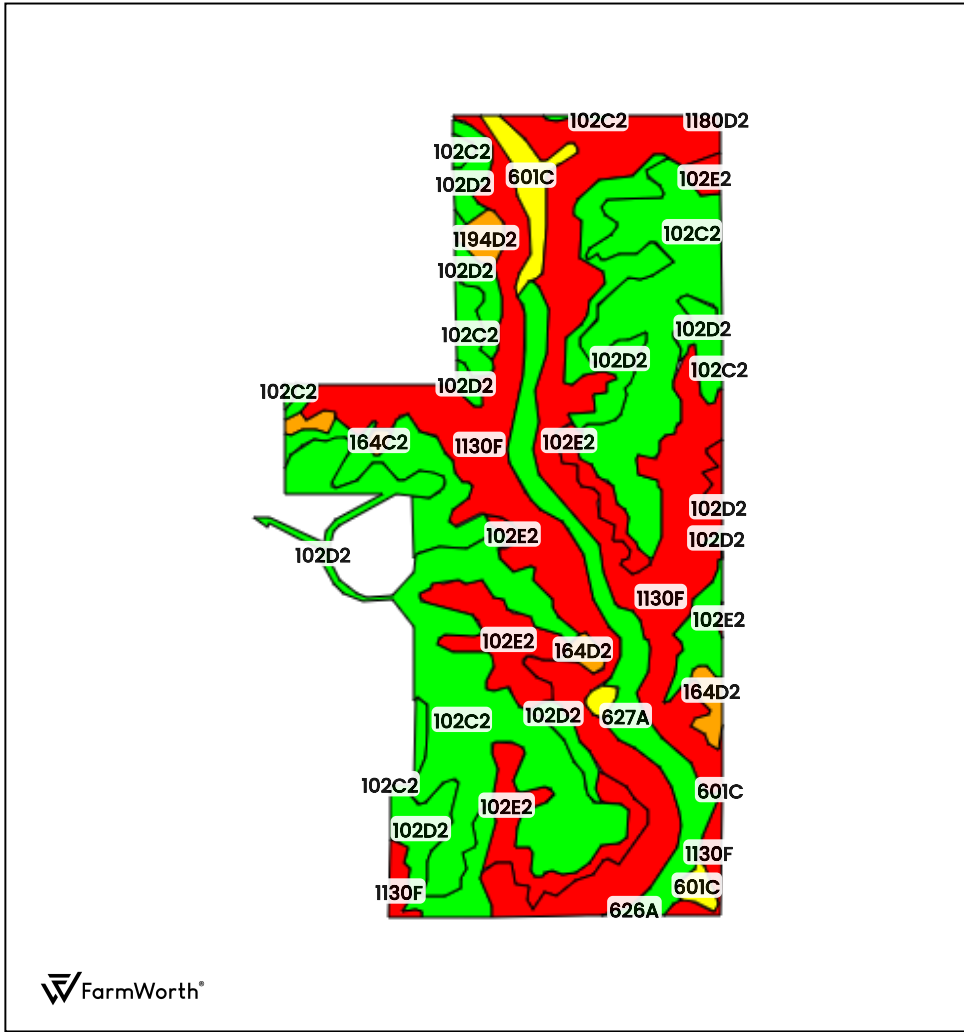


FarmWorth, LLC makes no warranties, express or implied, regarding the accuracy of any information provided through FarmWorth.com. User is solely responsible for independently verifying all information prior to use and waives any claims against FarmWorth, LLC arising from inaccuracies in such information.



STATE HIGHWAY 133 FARM (577.14 AC TOTAL, 140.54 AC TILLABLE)

TOTAL SOILS



County: Grant County, WI
 Location: 08-3N-5W
 Township: Cassville
 Acres: 577.14
 Date: 04/29/2026



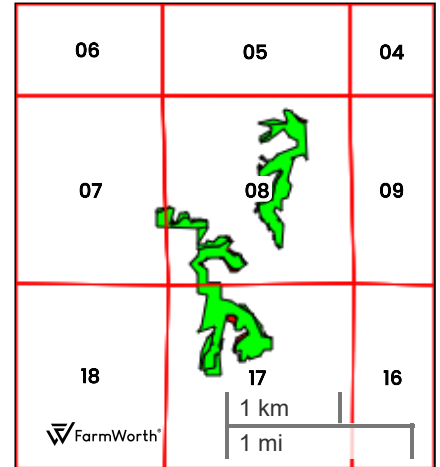
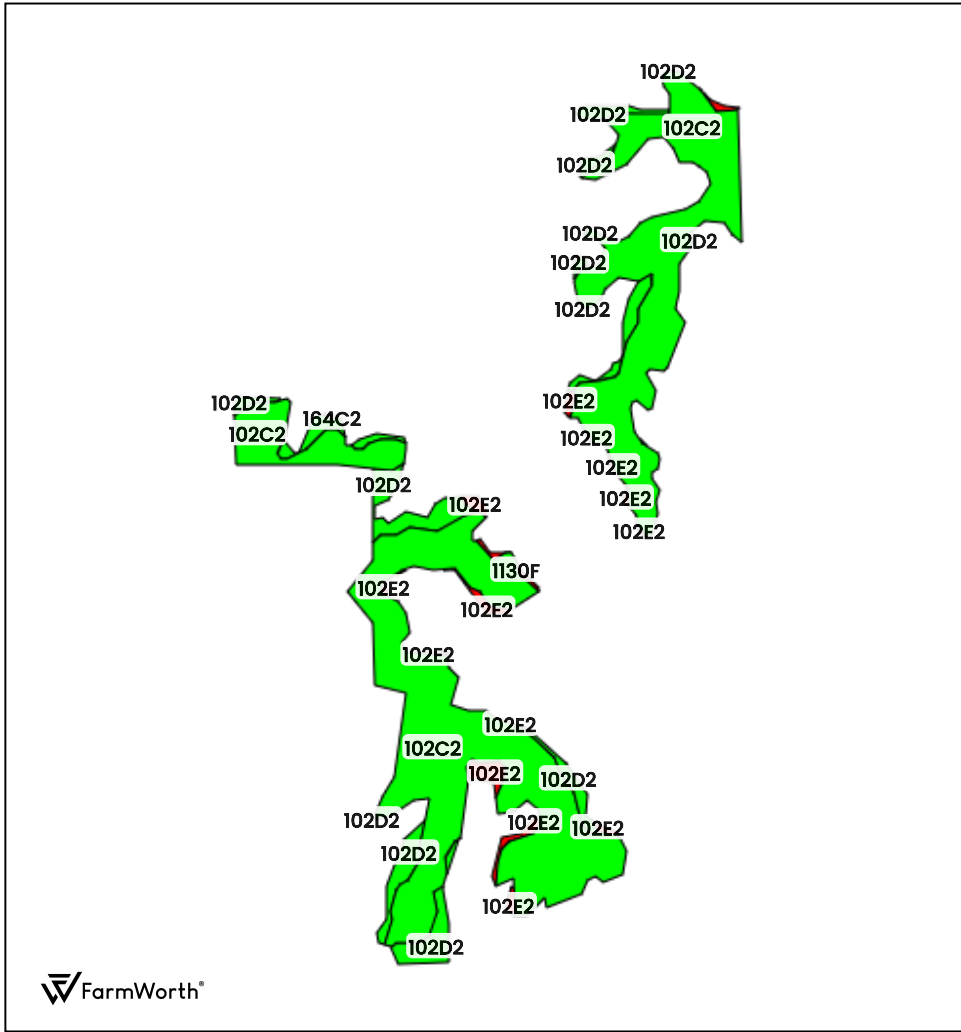
FarmWorth, LLC makes no warranties, express or implied, regarding the accuracy of any information provided through FarmWorth.com. User is solely responsible for independently verifying all information prior to use and waives any claims against FarmWorth, LLC arising from inaccuracies in such information.

Code	Description	Acres	% of field	Overall NCCPI	Soil Class (Non-Irr)	Drainage Class
1130F	Lacrescent-Dunbarton complex, very stony, 30 to 60 percent slopes	209.31	36.27 %	11	7	Well drained
102C2	Fayette silt loam, 6 to 12 percent slopes, moderately eroded	159.86	27.70 %	84	3	Well drained
102D2	Fayette silt loam, 12 to 20 percent slopes, moderately eroded	94.54	16.38 %	78	4	Well drained
102E2	Fayette silt loam, 18 to 35 percent slopes, moderately eroded	45.90	7.95 %	20	6	Well drained
627A	Chaseburg silt loam, moderately well drained, 0 to 2 percent slopes	37.67	6.53 %	82	2	Moderately well drained
601C	Beavercreek cobbly fine sandy loam, 3 to 12 percent slopes, occasionally flooded	13.96	2.42 %	53	6	Well drained
164D2	Sogn silt loam, 15 to 20 percent slopes, moderately eroded	7.95	1.38 %	40	7	Somewhat excessively drained
1194D2	Newglarus complex, 12 to 20 percent slopes, moderately eroded	4.01	0.69 %	49	4	Well drained
194E2	Newglarus silt loam, moderately deep, 20 to 30 percent slopes, moderately eroded	2.33	0.40 %	14	6	Well drained
164C2	Sogn silt loam, 10 to 15 percent slopes, moderately eroded	0.89	0.15 %	43	6	Somewhat excessively drained
626A	Arenzville silt loam, 0 to 3 percent slopes, occasionally flooded	0.63	0.11 %	88	2	Moderately well drained
1180D2	Newglarus-Dunbarton silt loams, 12 to 20 percent slopes, moderately eroded	0.08	0.01 %	44	4	Well drained
				Average:	49.4	

Soils data provided by USDA and NRCS.



STATE HIGHWAY 133 FARM
TILLABLE SOILS



County: **Grant County, WI**
 Location: **08-3N-5W**
 Township: **Cassville**
 Acres: **140.54**
 Date: **04/29/2026**



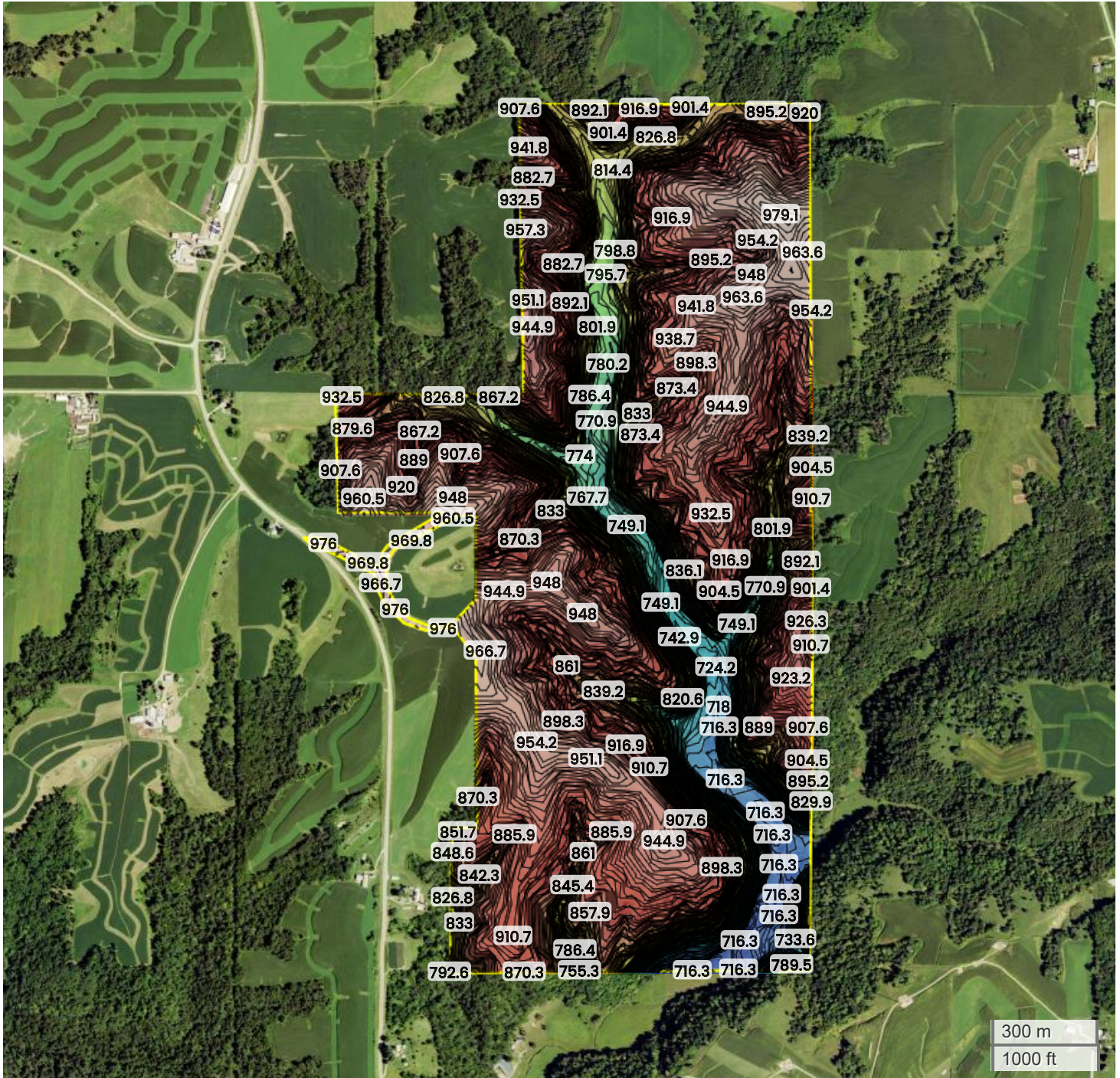
FarmWorth, LLC makes no warranties, express or implied, regarding the accuracy of any information provided through FarmWorth.com. User is solely responsible for independently verifying all information prior to use and waives any claims against FarmWorth, LLC arising from inaccuracies in such information.

Code	Description	Acres	% of field	Overall NCCPI	Soil Class (Non-Irr)	Drainage Class
102C2	Fayette silt loam, 6 to 12 percent slopes, moderately eroded	116.88	83.16 %	84	3	Well drained
102D2	Fayette silt loam, 12 to 20 percent slopes, moderately eroded	18.25	12.99 %	78	4	Well drained
102E2	Fayette silt loam, 18 to 35 percent slopes, moderately eroded	4.85	3.45 %	20	6	Well drained
1130F	Lacrescent-Dunbarton complex, very stony, 30 to 60 percent slopes	0.50	0.36 %	11	7	Well drained
164C2	Sogn silt loam, 10 to 15 percent slopes, moderately eroded	0.06	0.04 %	43	6	Somewhat excessively drained
				Average:	80.7	

Soils data provided by USDA and NRCS.



STATE HIGHWAY 133 FARM
TOPOGRAPHY



716 ft

979 ft



Center: 42.746061, -90.991099

08-3N-5W

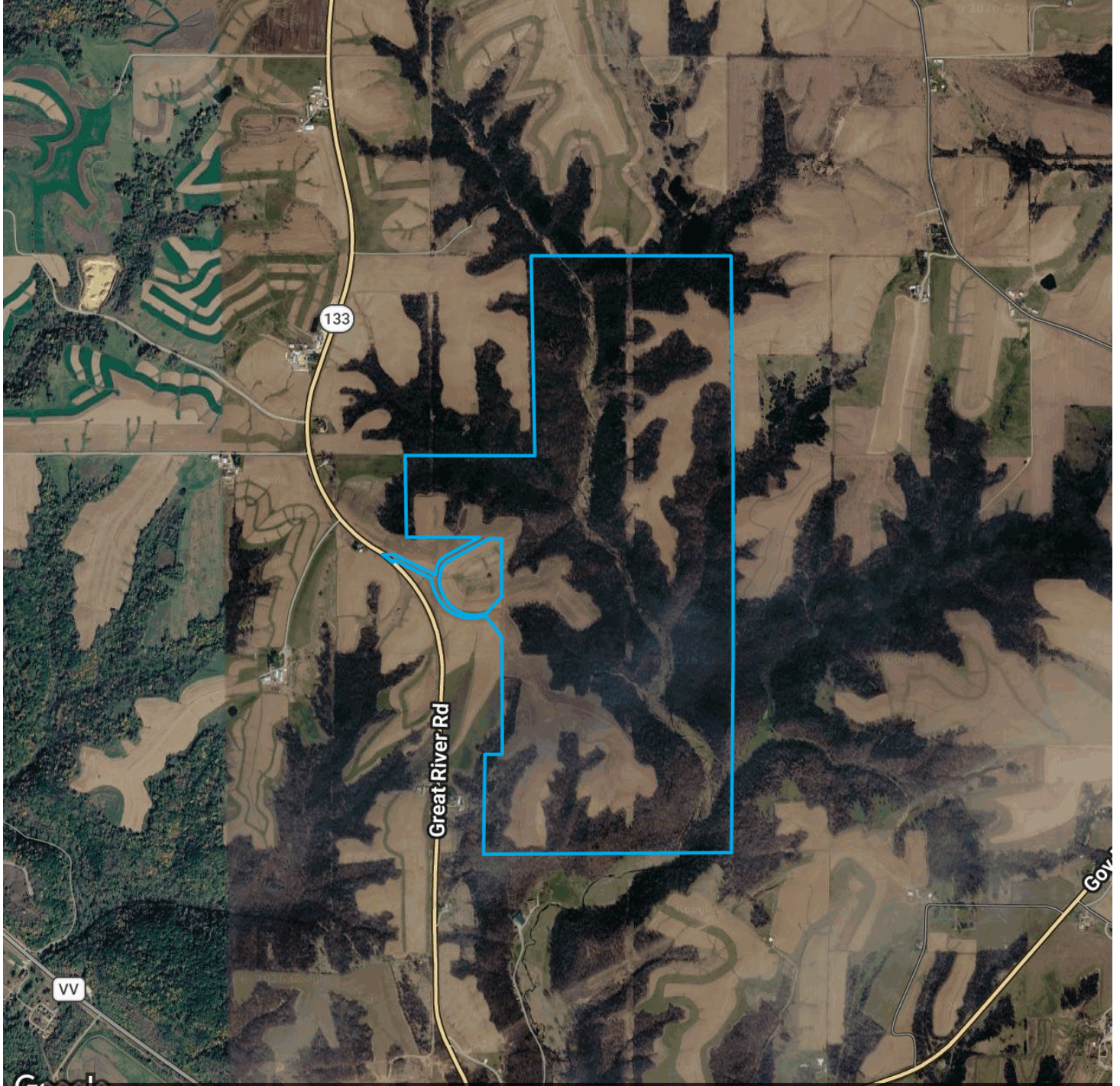
Cassville Township
Grant County, WI

Source: USGS 10m DEM
Interval(ft): 3
Max: 979.1 ft
Min: 716.3 ft
Range: 262.8 ft
Average: 847.7 ft

FarmWorth, LLC makes no warranties, express or implied, regarding the accuracy of any information provided through FarmWorth.com. User is solely responsible for independently verifying all information prior to use and waives any claims against FarmWorth, LLC arising from inaccuracies in such information.



STATE HIGHWAY 133 FARM PROXIMITY MAP



Map data ©2026 Google Imagery ©2026 Airbus, CNES / Airbus, Landsat / Copernicus, Maxar Technologies, USDA/FPAC/GEO



FarmWorth, LLC makes no warranties, express or implied, regarding the accuracy of any information provided through FarmWorth.com. User is solely responsible for independently verifying all information prior to use and waives any claims against FarmWorth, LLC arising from inaccuracies in such information.

 [Get Driving Directions](#)



STATE HIGHWAY 133 FARM REGIONAL MAP



FarmWorth, LLC makes no warranties, express or implied, regarding the accuracy of any information provided through FarmWorth.com. User is solely responsible for independently verifying all information prior to use and waives any claims against FarmWorth, LLC arising from inaccuracies in such information.

 [Get Driving Directions](#)